

## Village News

### Be Proud of Your Village

A blight on our village is parking, unfortunately there are those who feel they can park in any areas, this includes on grass verges, pavements and the like. What is not appreciated is the damage that is caused by this irresponsible action and the costs.

We regularly hear that local authorities do not have the funds to repair pot holes and the like, this is partly due to the fact that the money has to be spread over a wider area. We see damage to the footpath's as well as the grass verge's resulting in mud and grit being deposited onto the road. The footpaths have to be reinstated for the safety of pedestrians.



Parking on the grass verges does not only cause damage to the verge itself, irresponsible parking can also cause damage to the services below be it gas, electricity, telephone or other cabling. In wet weather mud deposited on the road by people who have parked on the grass verges can be dangerous, as vehicles having to brake in these conditions take longer to stop. If the vehicle is trying to stop

because of someone being in the road, the conditions can be the difference between a minor or more serious accident; it could be your child, relation or the family pet put in danger by mud left on the road. Also, the verge has to be reinstated and the kerbs have to be repaired all from an ever decreasing pot of money, unless it is recovered by increasing the council tax to pay for these repairs. In addition the mud and grit is washed into the drains by surface water, blocking them which results in localised flooding, something we can all do without. Here again there is a cost to the community.

So please consider where you park and think of the damage it does to the infrastructure and the cost of repair or reinstatement.

Please be proud of our Village and help us keep it a well kept village.

#### Inside this issue

2	<b>Be Proud of Our Village (contd.)</b>
3	<b>Thoughts on Activities for Adults</b> <b>Health Walks</b> <b>Picnic Bench</b>
4	<b>Stagecoach Spring Bus Service</b> <b>Protect Yourself</b> <b>Site Allocation Plan</b>
5	<b>Your Councillors</b> <b>Vacancy for a Councillor</b>
6	<b>Contact Information</b> <b>Vacancy for a Clerk</b>

## Be Proud of Our Village (continued)

### **Information from Winchester City Councils Animal Welfare Officer**

Kings Worthy has become the target of irresponsible dog owners in recent months. Of particular concern are Eversley Park, Broadview, the footpaths between Springvale Road and Lovedon Lane, and the footpaths around the school.

“Most owners clean up after their dogs these days,” explains Dave Griffiths, WCC’s Senior Animal Welfare Officer. “It is only a small percentage who are irresponsible so being in the right place the right time is a ‘needle in a haystack’ scenario; that’s why we need the help of members of the public”.

### **How you can help**

Offenders need to be identified. Should you witness an owner or dog walker failing to clean up after their dog in an area to which the general public have access, and you have the offender’s address, please report the incident to the City Council and appropriate action will be taken.

We would ask you to state that you saw the dog defecate on the public land and that the owner left the land without clearing up, give a description of the dog and the person walking the dog, where the person lives (if you know); give the exact time and date that the offence occurred and the exact location. A car registration sometimes helps if you see it.

Where a dog is loose without an owner or keeper present, fouling is still an offence if the owners is traced.

Commercial dog walkers are responsible for cleaning up after all dogs that are in their care.

### **The Dogs (Fouling of Land) Act 1996**

The Act applies to all areas to which the general public have access with the exception of agricultural land, commercial woodland, marshland, moors, heath, rural common land and carriageways with a speed limit over 40 mph. Privately owned land is included if the general public have access to the land but private gardens and drives are not included.

Remember that leaving a bag of dog faeces on public land or hung on trees/fences is not complying with the law. It must be placed in an appropriate bin.

Offenders caught by the Animal Welfare Team may be issued with a fixed penalty fine of £50. Failure to pay the fine may lead to prosecution with a maximum penalty of £1000.

Guide dog owners are exempt from the law.

### **Contact**

Please don’t hesitate to call if you require any more information about the legislation.

We are happy to spread the word about responsible dog ownership by giving free talks to kids in schools; Year 5 and 6 are ideal for us but we happy to talk to any age group.

You can contact us on **01962 848350** during office hours, or Email [ehealth@winchester.gov.uk](mailto:ehealth@winchester.gov.uk)

You can also find some information on our website:

<http://www.winchester.gov.uk/environment/dog-fouling>

## Thoughts on Activities for Adults

The Parish Council are still keen to get feedback from parishioners as to what outdoor activities for adults they would like to see in the village.

Some ideas that have already been put forward are Table Tennis, Bowls and Pétanque.

If anyone has any other suggestions please contact the Parish Office.



## Health Walks



The Parish Council are currently hoping to organise an ongoing 'Health Walk', and would like anyone who may be interested in joining this to call or email the Parish Council Office to give us an idea of how much interest there would be, in order to take this forward.

We would also be looking for people who would be interested in becoming a 'Walk Leaders'.

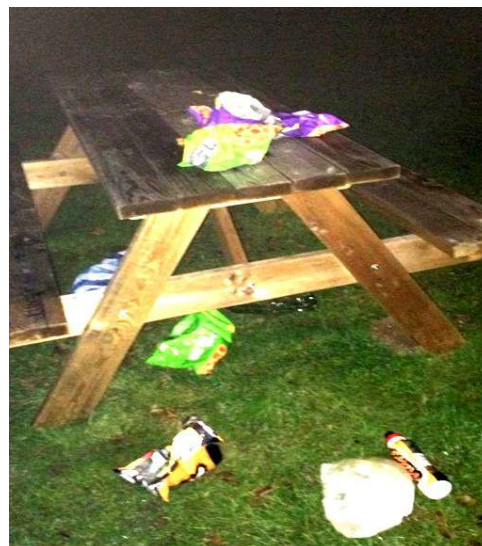
For anyone who would be interested in this, they would be required to attend a session where they would be taught all they need to know on how to lead a walk in a well run, friendly and safe manner.

## Picnic Bench

It is with disappointment that we feel it necessary once again to remind people of the importance of tidying up behind you when the picnic table, outside Tubbs Hall, has been used.

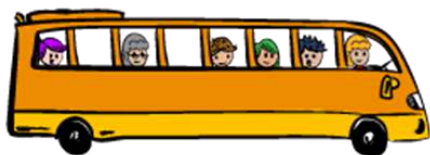
As this picture shows, some people still believe it's ok to walk away and leave their rubbish on and around the bench, when there are 3 bins positioned very close by... one being just a few feet away.

This is anti-social behaviour and not fair on the parishioners who appreciate and enjoy the facilities that are being put in place for the benefit of all.



## Stagecoach Spring Bus Service

After receiving complaints from parishioners in regard to buses either being late or not turning up, especially early mornings, we have invited a member of the company to once again attend a meeting with the Parish Council.



Confirmation has now been received that this will take place on 24th April at 7.30 at Tubbs Hall.

If you have any questions or complaints regarding the bus service, please feel free to attend.

## Protect Yourself

The police, through Neighbourhood Watch, are warning people to protect themselves now the warmer weather is here.

If you are in the garden please make sure that your house is secure, there have been incidents where people are in the garden having a barbecue, catching up on jobs in the garden or just relaxing. It only takes minutes for an opportunist thief to see an open window, allowing them access to car keys, iPads, laptops and money, all of which can be left in view and make an easy target.

If visiting the beach or beauty spots, make sure that all valuables are stored securely before you park your car; many people have had their car broken into because would be thieves have been watching you as you put valuables in the boot as you leave your car. They break in knowing where the valuables are, and they know you won't be back for a while (This rule applies to any car park or Park & Ride).

Here are some suggestions on keeping you safe from cyber crime or being caught out by random phone calls and emails.

- Use three random words to create a strong password
- Always download the latest software
- Don't share your PINs and passwords
- Listen to your gut instincts
- And most of all, take five before responding when you get an unexpected email or phone call.

## WCC – Site Allocations Local Plan

### Gypsy and Traveller and Travelling Showpeople – Site Allocations Local Plan

Winchester City Council are seeking your views on matters to be included in the Traveller Local Plan. If you wish to respond to this consultation then please do so by completing the short questionnaire, by midday 8th May 2017.

<https://winchester.citizenspace.com/policy-and-planning/traveller-local-plan>

## YOUR PARISH COUNCILLORS



**STEWART NEWELL**  
**CHAIRMAN**  
P&H, R&A & FAR



**MARTIN TAYLOR**  
**VICE CHAIRMAN**  
FAR



**IAN GORDON**  
P&H, FAR and  
Comms



**LES HASWELL**  
P&H



**MANDY HALLISEY**  
R&A and Comms



**DORRY LAWLOR - HUDSON**  
R&A, FAR and Comms



**KAREN McCLEERY**  
P&H



**NOEL McCLEERY**  
FAR



**JUDITH STEVENTON BAKER**  
P&H



**SARAH WHITE**  
R&A



**DENIS WELSTEAD**  
FAR

### OUR PARISH CLERKS



**ADRIAN REEVES**



**CHRIS READ**

R&A = Recreation and Amenities; P&H = Planning and Highways  
FAR = Finance, Administration & Remuneration; Comms = Communications team

## Vacancy for a Parish Councillor

Due to one of our long-standing Parish Councillors stepping down due to other commitments, we are inviting those who may be interested in joining the Parish Council, to contact the Clerk at the Parish Council Office in Tubbs Hall on 01962 884150, or via email on [kwpc@btconnect.com](mailto:kwpc@btconnect.com)

The Parish Council would like to thank Bob Barnes for his valuable contributions and hard work over the years.

## **KINGS WORTHY PARISH COUNCIL**

Kings Worthy Community  
Centre (Tubbs Hall)

Fraser Road

Kings Worthy

SO23 7PJ

Phone: 01962 884150

Email: [kwpc@btconnect.com](mailto:kwpc@btconnect.com)



**[www.theworthys.org.uk](http://www.theworthys.org.uk)**

### **PARISH COUNCIL INFORMATION**

Full Parish Council meetings 3rd Monday of each month (except August and December) 7.30pm.

#### **Sub - Committees :**

Recreation and Amenities (**R&A**) - 1st Thursday (except August and December) 7.30p.m.

Planning and Highways (**P&H**) - Last Tuesday 7.30p.m.

Finance, Administration & Remuneration (**FAR**) - 2nd Wednesday at 9.30am.

All meetings in Tubbs Hall – public welcome

Speak to the clerk first if you have a specific interest, so you can be directed to the most appropriate meeting.

OFFICE HOURS ARE MONDAY TO FRIDAY 10.30-3.30

(Please phone before visiting the office, to check the clerks are

## **Vacancy for a Parish Clerk**

### **Kings Worthy Parish Council - Clerk to the Council (part time)**

Kings Worthy Parish Council is one of the largest Parish Council's in Winchester district, serves a population of over 4500 and has a budget in excess of £100,000 per annum.

Due to the imminent retirement of our existing Clerk we are seeking to appoint a new Clerk.

The position is ideally suited to someone with a public administration background.

The successful candidate will ideally have the following skills and experience:

- General Management skills including managing people, projects, assets and property
- Experience of dealing with the general public
- Excellent written and oral communication skills
- Good computer literacy especially word processing and spreadsheets
- Financial management skills

The post is part time and the successful candidate will be expected to work 3 days per week (20hours), and in addition some evening working will be required to support meetings of the Parish Council and its 3 sub-committees.

Further details and a job description are available from the Parish Council website.

[www.theworthys.org.uk](http://www.theworthys.org.uk)

If you wish to apply, please submit your application in writing via email or post, using the contact details above.

Closing date for applications by **Friday 28th April**