

Recreation & Amenities Report June 2024

Playgrounds



We are very pleased to say that **Fraser Road** play area is now fully open with the return of the beloved train and penguin bin. The added installation of CCTV will hopefully discourage any future incidents.



At Eversley Park, our play area now known as Coronation Park has continued with its refurbishment. Whilst we are waiting on the completion of replacement zip line legs, we were very fortunate to receive some CIL funding from Winchester City Council. This funding has led to the installation of an accessible roundabout and talking flowers.

Adult Exercise equipment

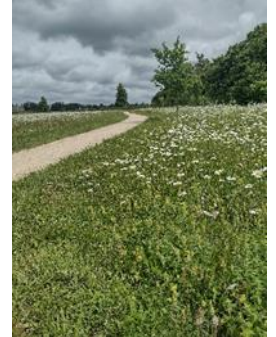
To the rear of the lower football pitch there is an area of Adult Exercise equipment which has now come to the end of its useful life and the R&A committee are looking into options for replacement.

If you are a user of the area, please contact us with any ideas and suggestions you may have for types of improved exercise equipment, similar to the existing.

Email: consultations@kingsworthy-pc.org.uk

Postal address: Parish Council Office, Kings Worthy Community Centre, Fraser Road, Kings Worthy, SP23 7PJ

Lovedon Meadow



Ownership of Lovedon Meadow was transferred to Kings Worthy Parish Council last year. Seeded back in 2016, it included **annual** wildflowers (like poppies) which naturally die out after a year or two and **perennial** flowers which should continue to grow for many years to come. There are yellow rattle, campion, ox-eye daisies and bedstraws to name a few.

The **programme of maintenance** we're using has been suggested to us by the consultant ecologists who designed and implemented the meadow back in 2016. Their recommendations include simply cutting the central meadow once per year (late August/early September) and removing the hay (after allowing it to dry) plus cutting a 1m buffer strip either side of the circular path to maintain clear access around the site. The outer meadow (between the path and the boundaries) is to be cut on a rotational basis – roughly one third per year.

The area of rougher ground closer to Eversley Park, was not seeded with wildflowers. For a long time this was the site compound, and you will notice the plant species here are different.

Buddleia, which is great for butterflies in the garden situation, can have a disastrous effect on natural ecology. It is very vigorous and seeds itself easily. While helping some of the commoner butterfly species, it can dominate a site in a short space of time, leaving less room for other native nectar-rich plants to thrive. This is why we will continue to keep buddleia in check at Lovedon Meadow.

A **survey** of wildflowers has been undertaken by the local Worthys Conservation Group and over the past year around 130 different species were noted with around 20 species of butterflies/moths/dragonflies. This truly is a haven for wildlife.

As we look after the area going forward, we try to balance the needs of people and wildlife. We recognise that the health and wellbeing of both are intrinsically linked.

If you have comments or queries about Lovedon Meadow, do let us know. Or perhaps send us photos of your favourite part. We'd welcome your feedback.

If you are planning an event or would like to use the Park for your business, e.g. exercise and fitness classes, please do contact the Parish Clerk (clerk@kingsworthy-pc.org.uk or phone 01962 884150) to confirm safety.